



RAPTOR X CHEMICAL ISOLATION

Technical Datasheet



APPLICATION

The Raptor X Chemical Isolation can detect an explosion in an early stage by means of pressure or flame detectors. Suppressant powder is injected at multiple locations forming a barrier preventing flame propagation.

The Raptor X Chemical Isolation is typically used to protect inlets and outlets of dust collectors, bucket elevators, chain conveyors, dryers, filters, mills, etc.

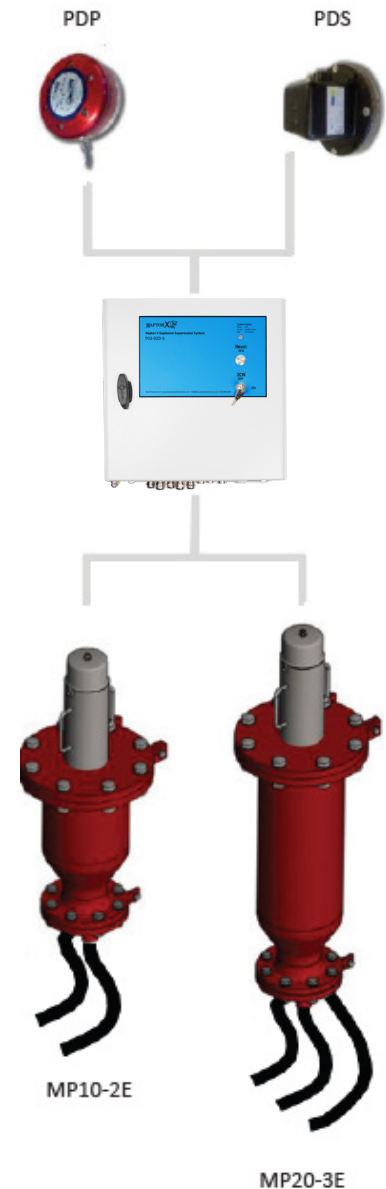
OPERATION

The Raptor X Chemical Isolation is modular in design and consists of three major components:

- Explosion detector(s) for the rapid detection of static pressure, dynamic pressure or light intensity (flame) increase
- Control unit directing the operation between detector and suppressor bottle
- Gas generator & suppressor bottle containing suppressant powder with one or multiple discharge hoses

KEY BENEFITS

- Food compliant sodium bicarbonate suppressant powder
- Non-pressurized system
- Up to 4 discharge hoses
- Easy mounting onto existing process equipment
- Easy to operate and maintain
- Robust modular design



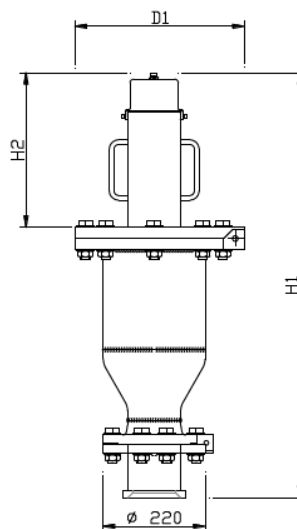


RAPTOR X CHEMICAL ISOLATION

Technical Datasheet



CHARACTERISTICS MP (MULTI-POINT DISCHARGE)		
SIZE	MP10-700cc	MP20-700cc
HOSE LENGTHS	4 ft= (1.2 m), 5 ft= (1.5 m), 6.5 ft= (2 m)	
MATERIAL	Painted steel, SS304	
TOTAL WEIGHT lbs (kg)	163.1 (74)	217.2 (98.5)
GAS GENERATOR	36.38 (16.5)	36.38 (16.5)
POWDER KIT	25.35 (11.5)	48.50 (22)
SUPPRESSION BOTTLE	101.41 (46)	132.28 (60)
DIMENSIONS H1 Inch (mm)	36.50 (927)	47.91 (1217)
H2 Inch (mm)	13.58 (345)	13.58 (345)
D1 Inch (mm)		14.37 (365)



MP20