



# RAPTOR X<sup>®</sup> SUPPRESSION BOTTLES - EAB

## Technical datasheet



The EAB suppression bottle is a key component of the Raptor X active chemical barrier systems, designed to stop explosions in their earliest phase. Controlled and monitored by the CU-P03 series control unit, it ensures fast, reliable response in high-risk environments.

## HOW IT WORKS

Each EAB bottle includes a painted steel body, that includes:

- Sodium bicarbonate extinguishing powder (food-grade)
- Gas generator
- Single discharge orifice

The sealed powder reservoir is maintained at atmospheric pressure, making it safe and easy to handle. When an explosion is detected, the control unit activates the gas generator, rapidly producing gas to discharge the powder and suppress the explosion before it can escalate.

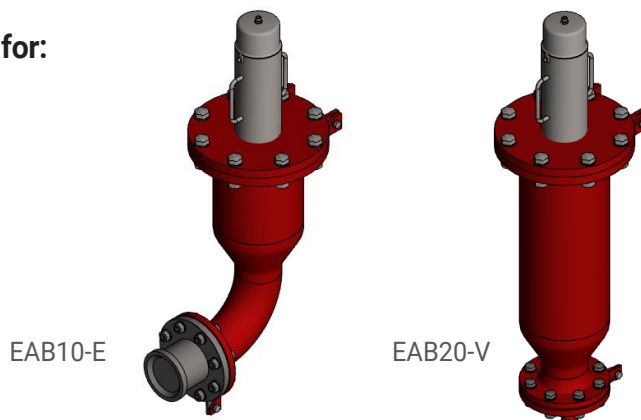
## APPLICATION

EAB bottles are designed for direct discharge and are ideal for:

- Enclosed process vessels
- Explosion isolation zones
- Compartmentalized systems

## AVAILABLE SIZES

- 2.64 Gallons/15.43Lbs (10L/7kg)
- 5.28 Gallons/30.86 Lbs (20L/14kg)



## KEY BENEFITS

- **PED-Exempt:** No permanent pressure means no classification under Pressure Equipment Directive (PED)
- **Safe Handling:** No risk of accidental discharge during installation or maintenance
- **Food-Grade Suppressant:** Compliant with EN1935, suitable for food and pharmaceutical applications
- **Modular Design:** Powder kits can be easily assembled or replaced on-site



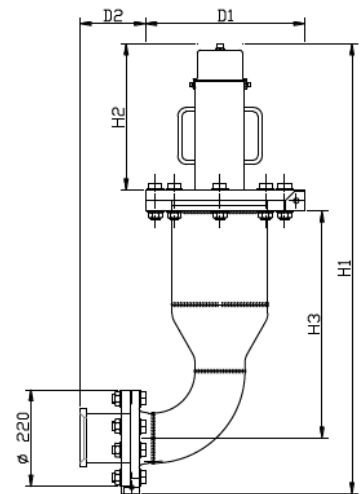
# SUPPRESSION BOTTLES - EAB

## Technical datasheet



### CHARACTERISTICS EAB-E (ANGLED OUTLET)

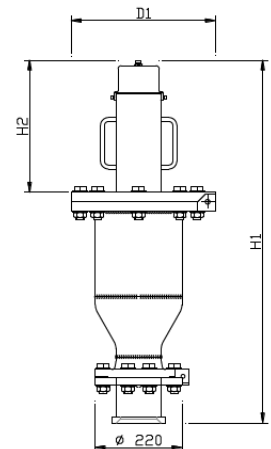
	EAB10E-700cc	EAB20E-700cc	EAB20E-1150cc
HOLE DIAMETER Inch (mm) (PROCESS SIDE)	Ø4.92 (125)		
MATERIAL	Painted steel, SS304		
TOTAL WEIGHT lbs (kg)	165.3 (75)	219.4 (99.5)	251.3 (114)
GAS GENERATOR	36.38 (16.5)	36.38 (16.5)	68.34 (31)
POWDER KIT	25.35 (11.5)	48.50 (22)	48.50 (22)
SUPPRESSION BOTTLE	103.62 (47)	134.48 (61)	134.48 (61)
DIMENSIONS H1 Inch (mm)	40.87 (1038)	52.28 (1328)	55.90 (1420)
H2 Inch (mm)	13.58 (345)	13.58 (345)	17.09 (434)
H3 Inch (mm)	20.51 (521)	31.93 (811)	31.93 (811)
D1 Inch (mm)		14.37 (365)	
D2 Inch (mm)		5.91(150)	



EAB10-E

### CHARACTERISTICS EAB-V (STRAIGHT OUTLET)

	EAB10V-700cc	EAB20V-700cc	EAB20V-1150cc
HOLE DIAMETER Inch (mm) (PROCESS SIDE)	Ø4.92 (125)		
MATERIAL	Painted steel, SS304		
TOTAL WEIGHT lbs (kg)	163.1 (74)	217.2 (98.5)	249.1 (113)
GAS GENERATOR	36.38 (16.5)	36.38 (16.5)	68.34 (31)
POWDER KIT	25.35 (11.5)	48.50 (22)	48.50 (22)
SUPPRESSION BOTTLE	101.41 (46)	132.28 (60)	132.28 (60)
DIMENSIONS H1 Inch (mm)	(927)	(1217)	(1306)
H2 Inch (mm)	13.58 (345)	13.58 (345)	17.09 (434)
D1 Inch (mm)		14.37 (365)	



EAB20-V