



PRODUCT CODE: 58000

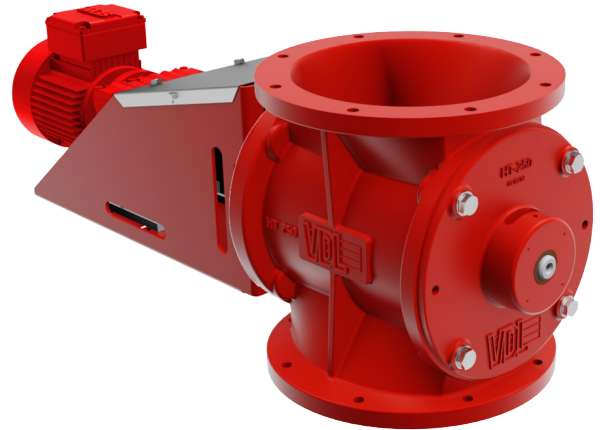
# Certified Rotary Valve EMVDL-RVEX-HT

Feeder valve for screw conveyors, scales, dryers and coolers

Sizes: 10", 14" & 18"

## CERTIFICATIONS & STANDARDS

- NFPA 69 Compliant - ATEX Certified EN 15089
- OSHA Compliant drive guard for the Explosion Isolation Model
- Flex tip design certified to prevent flame passage for Passive Explosion Isolation

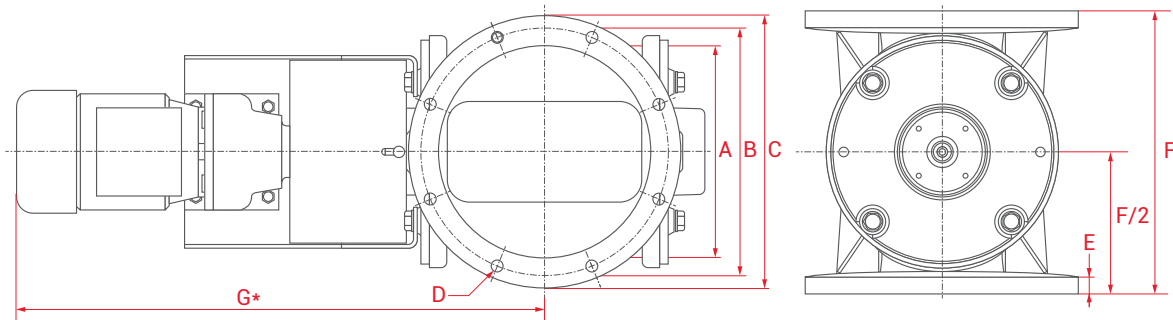


## STANDARD FEATURES

- Cast iron housing with safety red finish EX version
- Differential pressures up to **40" WC**
- Direct drive gearmotor with flex coupling
- Airlock in dust collector and cyclone installations
- Explosion and Flame Proof design rated up to **25 PSI / 670" WC**

## OPTIONAL FEATURES

- Variable speed drive control option
- Square to round flange adapter including gasket and mounting bolts

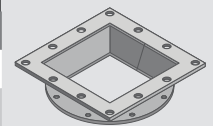


### DIMENSIONS\*

| MODEL | 15 RPM HP | 30 RPM HP | CAPACITY FT <sup>3</sup> (LTR) | Ø A          | Ø B          | Ø C          | D          | E             | F*           | G            |
|-------|-----------|-----------|--------------------------------|--------------|--------------|--------------|------------|---------------|--------------|--------------|
| HT250 | 0.33      | 0.75      | 0.24 (7)/rev                   | 10" (250 mm) | 12" (290 mm) | 13" (320 mm) | 8 x Ø12 mm | 0.79" (20 mm) | 13" (330 mm) | 24" (620 mm) |
| HT350 | 0.50      | 1.00      | 0.70 (20)/rev                  | 14" (340 mm) | 15" (390 mm) | 17" (420 mm) | 8 x Ø12 mm | 0.79" (20 mm) | 16" (400 mm) | 26" (670 mm) |
| HT450 | 1.00      | 2.00      | 1.23 (35)/rev                  | 17" (420 mm) | 19" (490 mm) | 21" (525 mm) | 8 x Ø12 mm | 0.79" (20 mm) | 20" (500 mm) | 33" (850 mm) |

### SQUARE TO ROUND TRANSITIONS\*

| SQUARE TRANSITION (Nominal Size Inches)    | 6X6           | 8X8           | 10X10         | 12X12         | 14X14         | 16X16         |
|--|---------------|---------------|---------------|---------------|---------------|---------------|
| SRT  | HT250         | HT250         | HT250         | HT350         | HT350         | HT450         |
| Transition Height                          | 2.84" (72 mm) | 2.80" (71 mm) | 2.80" (71 mm) | 2.80" (71 mm) | 2.80" (71 mm) | 3.43" (87 mm) |
| Overall Height (Dim F + Transition Height) | 16" (402 mm)  | 16" (401 mm)  | 16" (401 mm)  | 19" (471 mm)  | 19" (471 mm)  | 23" (587 mm)  |



\* Length varies dependent on motor selection – Units in inches rounded to the closest whole number

copyright 2022 Boss Products, LLC

