

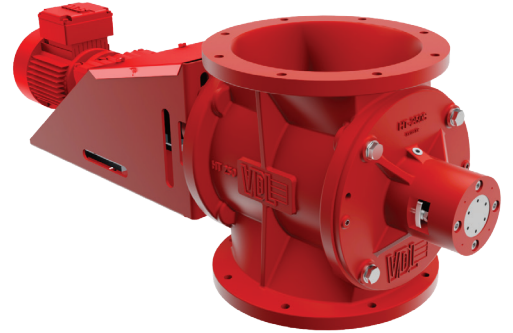
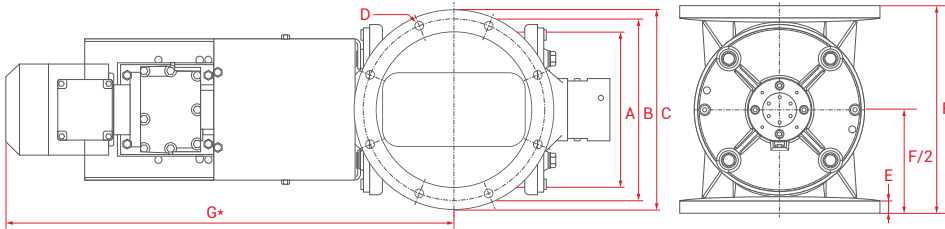


HTS SERIES

Ideal for high-vacuum applications

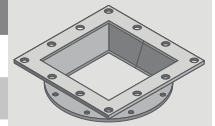


PEOPLE. PARTNERSHIP. PERFORMANCE.



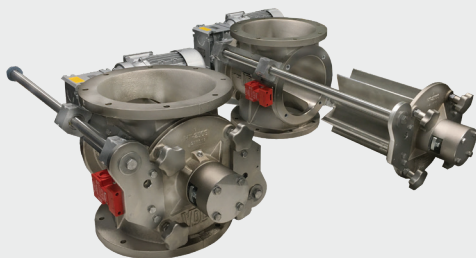
DIMENSIONS*										
MODEL	15 RPM HP	30 RPM HP	CAPACITY FT ³ (LTR)	Ø A	Ø B	Ø C	D	E	F*	G
HTS250	0.33	0.75	0.24 (7)/rev	10" (250mm)	12" (290mm)	13" (320mm)	8xØ12mm	0.79" (20mm)	13" (330mm)	28" (710mm)
HTS350	0.50	1.00	0.70 (20)/rev	14" (340mm)	15" (390mm)	17" (420mm)	8xØ12mm	0.79" (20mm)	16" (400mm)	33" (830mm)

SQUARE TO ROUND TRANSITIONS					
SQUARE TRANSITION(Nominal Size Inches)	6X6	8X8	10X10	12X12	14X14
SRT	HTS250	HTS250	HTS250	HTS350	HTS350
Transition Height	2.84" (72mm)	2.80" (71mm)	2.80" (71mm)	2.80" (71mm)	2.80" (71mm)
Overall Height (Dim F + Transition Height)	16" (402mm)	16" (401mm)	16" (401mm)	19" (471mm)	19" (471mm)



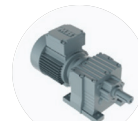
* Length varies dependent on motor selection – Units in inches rounded to the closest whole number

QUICK-DISASSEMBLY EASY CLEAN VERSION



A new, quick-disassembly variant of the HTS rotary valve. This HTS Easy Clean rotary valve combines the qualities of the HTS with a high degree of cleaning efficiency, because the rotor can be removed and replaced easily and without tools. Cast iron house and chemically nickel-plated. The stainless steel AISI316 rotor, casted in one piece, has a stainless steel slide with aluminum bearing housing.

OPTIONS AND ACCESSORIES



Special drives



Different colors



Hard chrome plating



Chemical nickel plating



Speed monitoring



Seals & flanges



Product scraper



Air purge



Insulation box

More options:

- Rotor polishing
- Teflon coatings
- Wear-resistant coatings
- Special rotorblades